

NEWLY AVAILABLE

BRIGHT OFFICE FLOOR TO LET

66-68 MARGARET STREET, W1
(corner building with Great Titchfield Street)

Braham Good

SURVEYORS & COMMERCIAL
PROPERTY CONSULTANTS

020 7935 1653
www.brahamgood.co.uk

PROPERTY PARTICULARS



LOCATION

This prominent building is situated on the south side of Margaret Street at the junction with Great Titchfield Street. The vibrant life of Market Place is just around the corner and Oxford Circus underground station is within a few minutes walk.

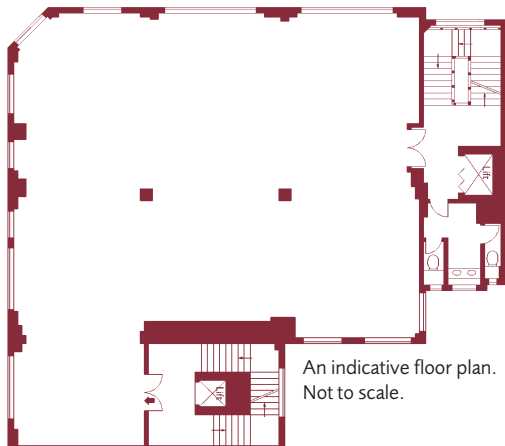
ACCOMMODATION

Comprises an entire **fourth floor** office suite, that measures approximately **2,154 sq ft**, which is shortly to be redecorated and recarpeted and put back into its original open plan layout.

The ground floor entrance, common parts and WCs have all recently been refurbished.

FEATURES

- Central heating
- Entry phone system
- Newly refurbished WCs and shower
- Superb natural light on three sides
- Passenger lift
- Secondary entrance with goods lift
- Good ceiling height



An indicative floor plan.
Not to scale.

RENT £75,000 per annum exclusive.

TERM A new lease is available direct from the Landlords for a term by arrangement.

VIEWING For further information or an appointment to view please call sole agents:

BRAHAM GOOD Contact: **Andrew Rosen**

46 Blandford Street, London W1U 7HT
T 020 7935 1653
F 020 7935 7272
www.brahamgood.co.uk

Established 1971
Registered in England No. OC306578
In association with **Alexander Reece Thomson**

IMPORTANT NOTICE

These particulars are provided as a general guide only and do not form part of any offer or contract. No representation or warranty is given and interested parties should satisfy themselves as to the accuracy of all information provided. (November 2008)