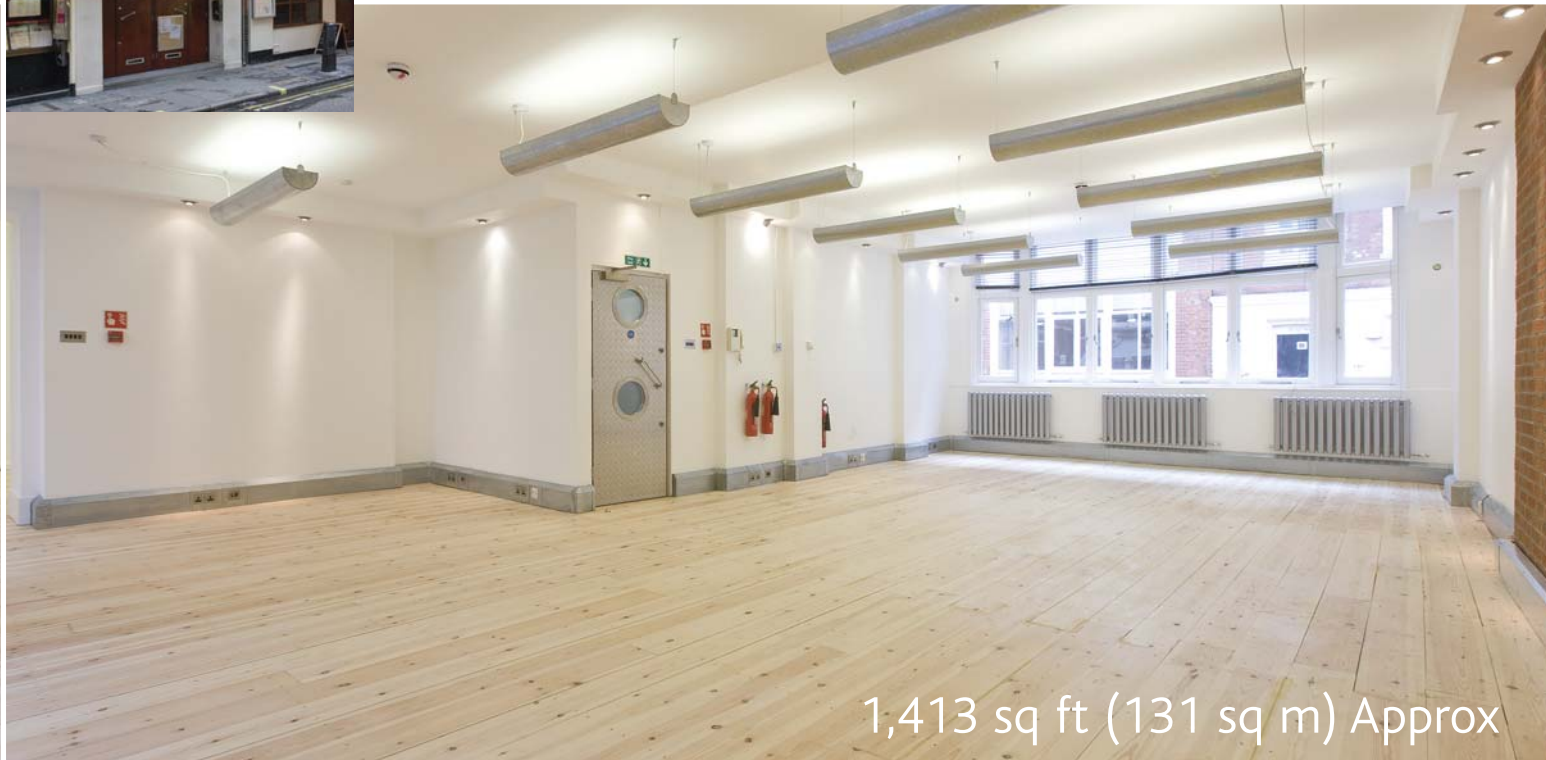


12-14 DENMAN STREET LONDON W1

ON THE INSTRUCTIONS OF
Shaftesbury PLC



SUPERB MEDIA STYLE OFFICES



1,413 sq ft (131 sq m) Approx





ACCOMMODATION

Comprises a newly refurbished self-contained first floor open plan office suite, which has the benefit of solid wood flooring throughout, comfort cooling, private WCs and shower room and measures approx.

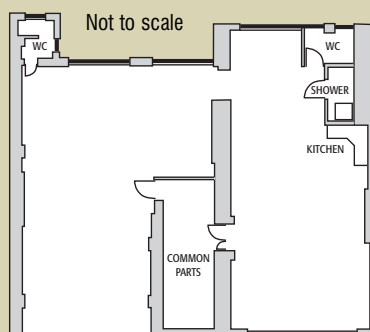
1,413 sq ft (131 sq m)

FEATURES

- Automatic passenger lift
- Comfort cooling
- Solid wood flooring
- Exposed brickwork walls
- Perimeter trunking
- Plaster ceilings
- Private WC's
- Independent central heating
- Excellent natural light
- Shower room
- Kitchenette
- Video entry phone

LOCATION

The building occupies a prominent position on the north side of Denman Street and is within close proximity to numerous restaurants, shopping and transport facilities in and around Soho and Chinatown. Both Piccadilly Circus and Leicester Square underground stations are close by.



LEASE

New lease for a term by arrangement.

RENT

On application.

VIEWING

Strictly by appointment through sole letting agents.

Andrew Rosen

Braham Good

SURVEYORS & COMMERCIAL
PROPERTY CONSULTANTS

020 7935 1653
www.brahamgood.co.uk

46 Blandford Street, London W1U 7HT

These particulars are provided as a general guide only and do not form part of any offer or contract. No representation or warranty is given and interested parties should satisfy themselves as to the accuracy of all information provided. (July 2009)

